



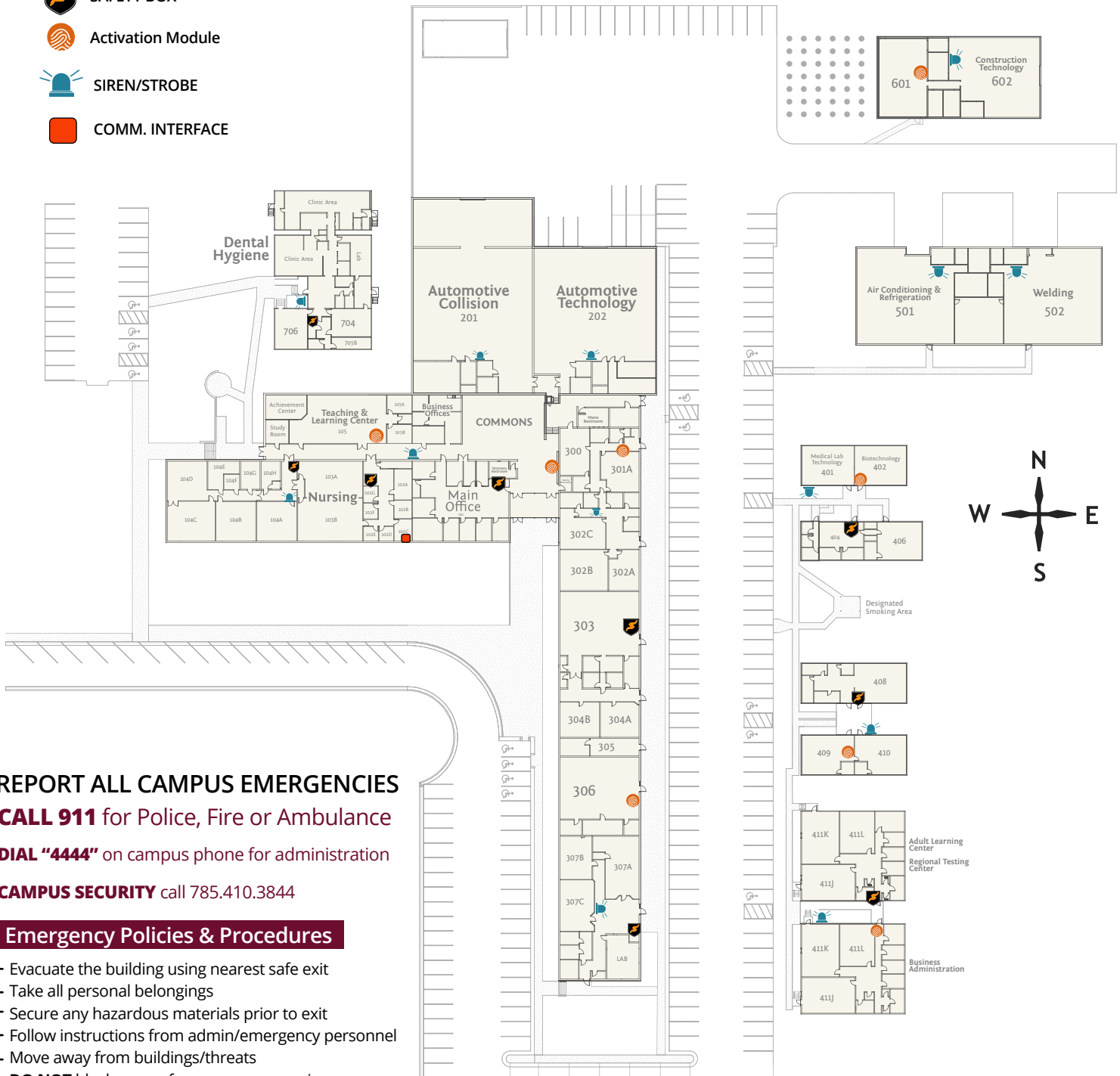


EMERGENCY MAP



-  SAFETY BOX
-  Activation Module
-  SIREN/STROBE
-  COMM. INTERFACE



REPORT ALL CAMPUS EMERGENCIES

CALL 911 for Police, Fire or Ambulance

DIAL "4444" on campus phone for administration

CAMPUS SECURITY call 785.410.3844

Emergency Policies & Procedures

- Evacuate the building using nearest safe exit
- Take all personal belongings
- Secure any hazardous materials prior to exit
- Follow instructions from admin/emergency personnel
- Move away from buildings/threats
- **DO NOT** block access for emergency services

FIRE • SMOKE • EXPLOSION

- Activate nearest fire alarm & **CALL 911**
- Evacuate building
- Await instructions from fire department

CAMPUS VIOLENCE

- **DO NOT** intercede or engage with aggressive individual
- **Call 911** and inform Manhattan Tech staff member

WEATHER WARNINGS

- Listen for all warnings, sirens, and announcements
- Stay away from windows and exterior doors
- Move to shelter areas

ILLNESS • INJURY • ACCIDENTS

- If life threatening **CALL 911** and inform a Manhattan Tech employee
- If not life threatening, ask individual what assistance is needed

