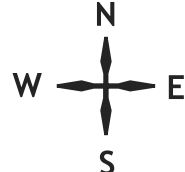
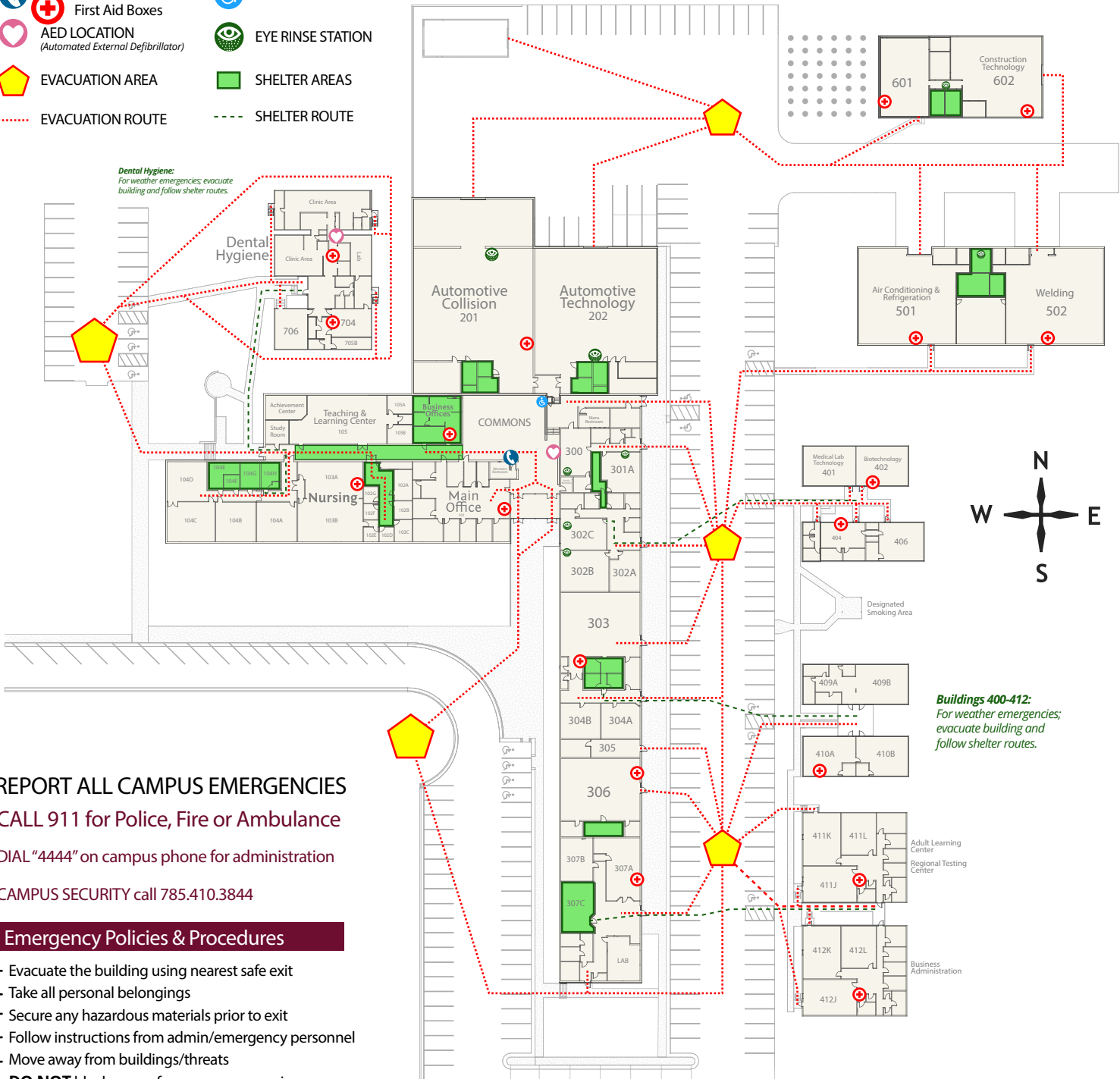


EMERGENCY MAP



- COURTESY PHONE
- First Aid Boxes
- AED LOCATION
(Automated External Defibrillator)
- EVACUATION AREA
- EVACUATION ROUTE
- ELEVATOR
- EYE RINSE STATION
- SHELTER AREAS
- SHELTER ROUTE



REPORT ALL CAMPUS EMERGENCIES
CALL 911 for Police, Fire or Ambulance
 DIAL "4444" on campus phone for administration
 CAMPUS SECURITY call 785.410.3844

Emergency Policies & Procedures

- Evacuate the building using nearest safe exit
- Take all personal belongings
- Secure any hazardous materials prior to exit
- Follow instructions from admin/emergency personnel
- Move away from buildings/threats
- **DO NOT** block access for emergency services

FIRE • SMOKE • EXPLOSION

- Activate nearest fire alarm & **CALL 911**
- Evacuate building
- Await instructions from fire department

CAMPUS VIOLENCE

- **DO NOT** intercede or engage with aggressive individual
- **Call 911** and inform Manhattan Tech staff member

WEATHER WARNINGS

- Listen for all warnings, sirens, and announcements
- Stay away from windows and exterior doors
- Move to shelter areas

ILLNESS • INJURY • ACCIDENTS

- If life threatening **CALL 911** and inform a Manhattan Tech employee
- If not life threatening, ask individual what assistance is needed